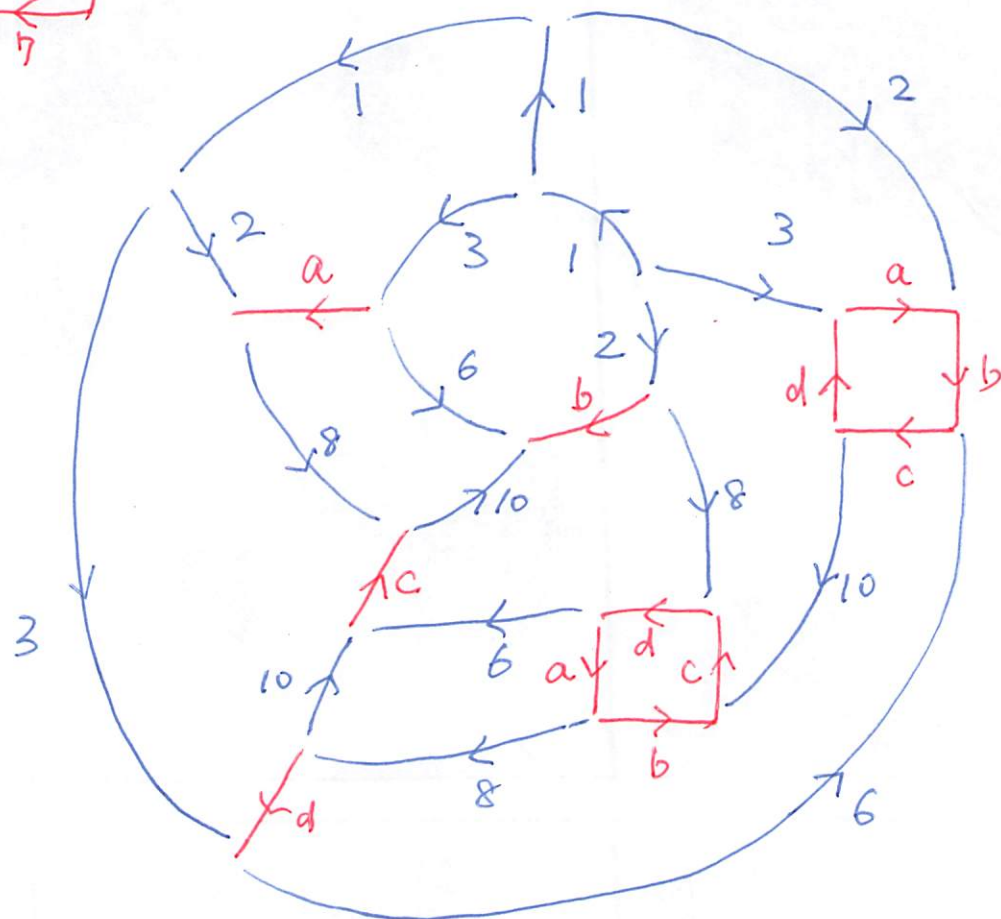
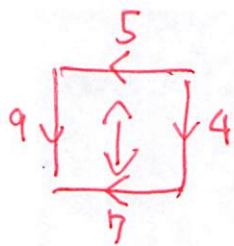


K5-28



$1 \rightarrow 1$

$2 \rightarrow 2$

$3 \rightarrow 3$

$a \rightarrow 4^{-1}$

$b \rightarrow 5$

$c \rightarrow 10$

$d \rightarrow 8^{-1}$

$6 \rightarrow 7$

$8 \rightarrow 6$

$10 \rightarrow 9^{-1}$

K5-42